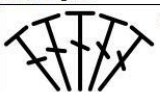










CAL Belle Shawl – Časť 3



ABBREVIATIONS:

Stitch Legend	
	5-dc shell - 5 double crochet shell
	FPdc - front post double crochet
	adjustable ring -
	ch - chain
	dc - double crochet
	sc - single crochet
	t-ch3 - triple turning chain

MIDDLE – into the middle 3-chain space – 2dc,ch3,2dc



Pattern

We finished the first part with row 16 (in green on the diagram) and the second part continues with row 17.

Row 17 – ch4, 2dc into the chain space, then pattern *dc, ch1 and skip1* - repeat this until the last stitch before the middle gap, dc, MIDDLE, then pattern *dc, ch1 and skip1* - repeat this until the last stitch before the middle gap, dc, 2dc to the chain stitch, ch1 and dc to the last stitch (= 75 + 2 stitches on the side + ch3 in the middle)

Row 18 – ch4, 2dc into the chain space, then make dc to each stitch, MIDDLE, then again make dc to each stitch, 2dc to the chain stitch, ch1 and dc to the last stitch (= 79 + 2 stitches on the side + ch3 in the middle)

Row 19 – ch4, 2dc to the chain space, dc, skip2 and 5-dc shell to the next stitch, skip2 and then pattern *dc, skip2 and to the next stitch 5-dc shell and again skip2 sts* - this pattern between *- repeat 11 more times, dc then make MIDDLE. On the other side of the work, dc, skip2 sts and into the next make 5-dc shell, skip2 and then pattern *dc, skip2 and to the next stitch 5-dc shell and again skip2 sts* - this pattern between *- repeat 11 more times, dc, then to the chain st make 2dc, ch1 and dc to the last stitch (= 83 + 2 stitches on the side + ch3 in the middle)

Row 20 - ch4, 2dc into the chain space, then 2dc and then pattern *dc, ch2 and sc to the third dc in the middle of the shell, ch2* - this repeat in total 13 times, then 3dc, MIDDLE, then again 2dc, then pattern *dc, ch2 and sc to the third dc in the middle of the shell, ch2* - this repeat in total 13 times, then 3dc, 2dc to the chain stitch, ch1 and dc to the last stitch (= 87 + 2 stitches on the side + ch3 in the middle)

Row 21 - ch4, 2dc into the chain space, then make dc to each stitch, MIDDLE, then again make dc to each stitch, 2dc to the chain stitch, ch1 and dc to the last stitch (= 91 + 2 stitches on the side + ch3 in the middle)

Row 22 - ch4, 2dc into the chain space, then pattern *dc, ch1 and skip1* - repeat this until the last stitch before the middle gap, dc, MIDDLE, then pattern *dc, ch1 and skip1* - repeat this until the last stitch before the middle gap, dc, 2dc to the chain stitch, ch1 and dc to the last stitch (= 95 + 2 stitches on the side + ch3 in the middle)

Row 23 - ch4, 2dc into the chain space, then make dc to each stitch, MIDDLE, then again make dc to each stitch, 2dc to the chain stitch, ch1 and dc to the last stitch (= 99 + 2 stitches on the side + ch3 in the middle)

Row 24 - ch4, 2dc into the chain space, then make FPdc to each stitch, MIDDLE, then again make FPdc to each stitch, 2dc to the chain stitch, ch1 and dc to the last stitch (= 103 + 2 stitches on the side + ch3 in the middle)

Diagram part 3 - right front side (left side is the same/mirror)

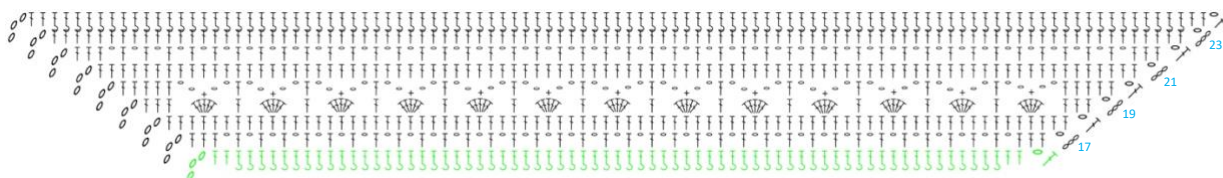
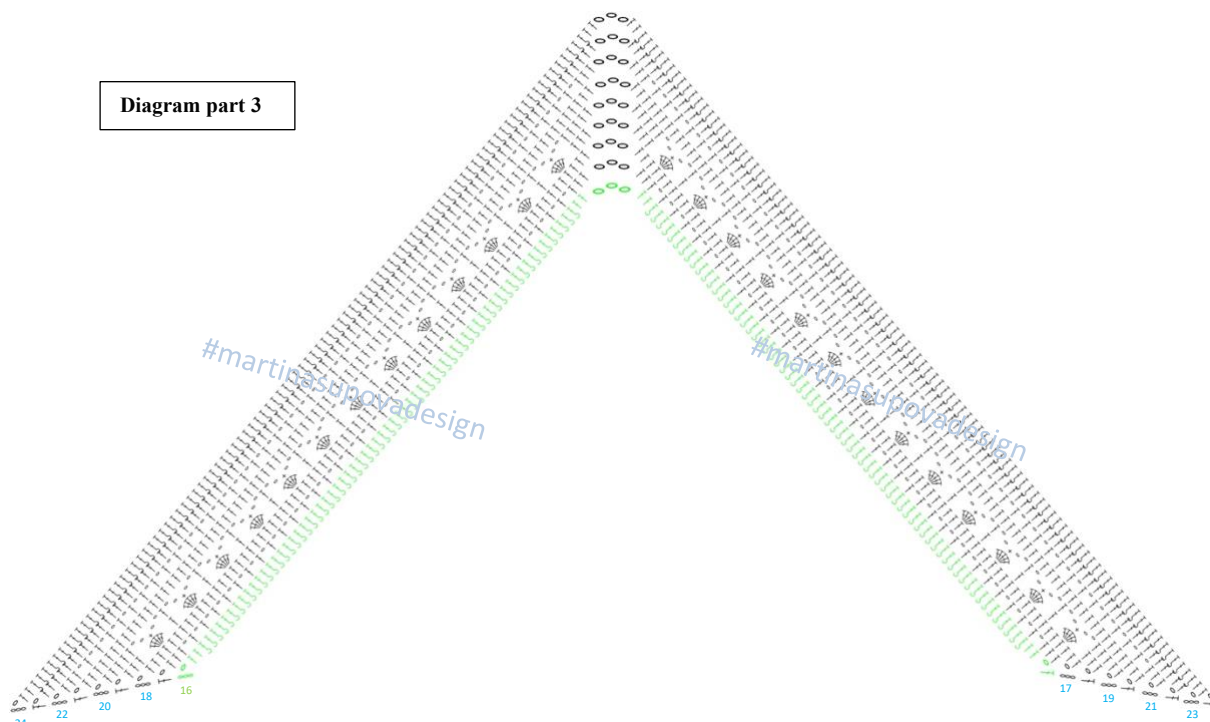




Diagram part 3



This is the end of the third part of the tutorial. There will be changes in the next part, so stay tuned for the fourth part.

End of the third part, the next part will be published on 19th September

MORE INFORMATION ABOUT THE PATTERNS CAN BE FOUND AT:

FACEBOOK - [HTTP://WWW.FACEBOOK.COM/COLORFULLMADESHOP](http://www.facebook.com/colorfullmadeshop)

FB GROUP SKUPINA MARTINA SUPOVA DESIGN - [HTTP://WWW.FACEBOOK.COM/GROUPS/651482826291780](http://www.facebook.com/groups/651482826291780)